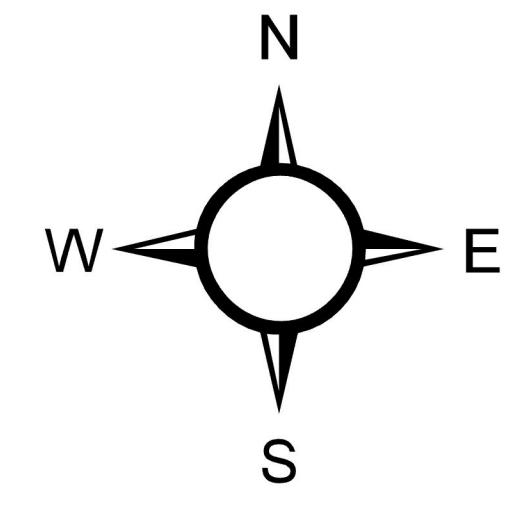


- ◆ Compressor Stations
 - ▭ Subsurface Mines
 - ▭ Municipalities
 - Natural Gas Pipelines
 - Hydrocarbon Liquid Pipelines
 - FracTracker Digitized Pipelines
- Unconventional Wells
 - Abandoned
 - Active
 - Operator Reported Not Drilled
 - Plugged OG Well
 - Proposed But Never Materialized
 - Regulatory Inactive Status



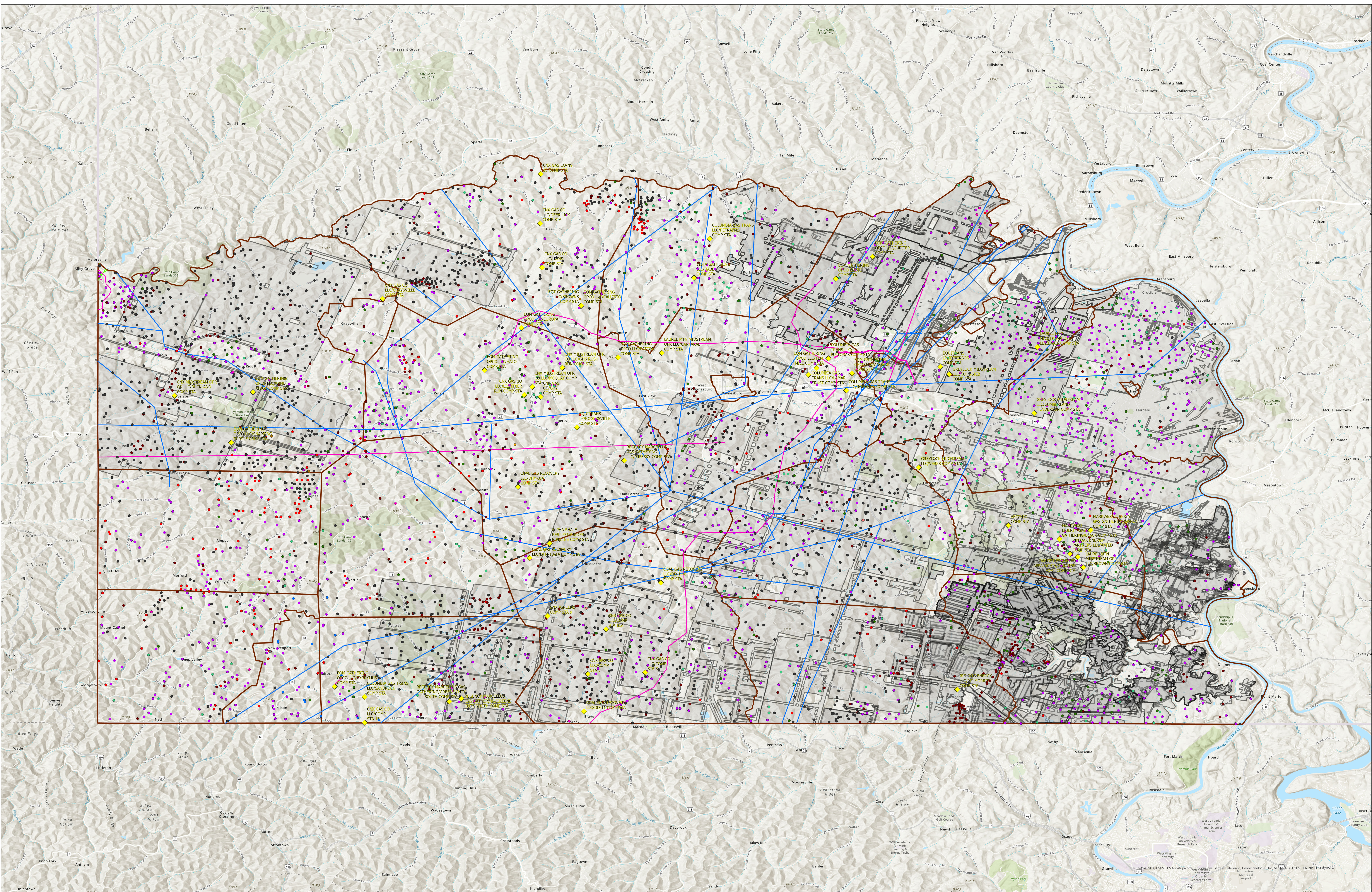
Unconventional Oil and Gas Wells in Greene County, PA and Related Infrastructure

This map shows the location of unconventional oil and gas wells in Greene County, Pennsylvania as of July 2, 2024, according to data published by Pennsylvania Department of Environmental (DEP) Protection. Unconventional drilling operations typically have numerous industrial-scaled wells located on a single pad on the surface, which extend laterally for miles in the wells' target formations.

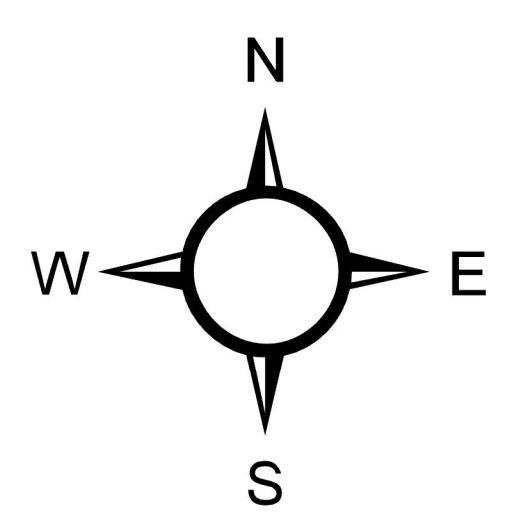
The gas pipelines and hydrocarbon liquids pipelines layers were obtained from the US Department of Homeland Security's open data portal. The locational accuracy of these layers is intentionally poor, ostensibly for national security reasons. However, other government agencies and sometimes the companies themselves sometimes publish more accurate route maps for newer projects, many of which have been digitized by FracTracker and are included in the FracTracker Recent Pipelines layer. While we make this as accurate as possible with the available information, none of these pipeline layers should be considered authoritative, and are shown here for reference purposes only.

Other layers shown here include the extent of subsurface mines, also from DEP via the Pennsylvania Spatial Data Access (PASDA). Compressor station data is from DEP air reports.





- ◆ Compressor Stations
 - ▭ Subsurface Mines
 - ▭ Municipalities
 - Natural Gas Pipelines
 - Hydrocarbon Liquid Pipelines
 - FracTracker Digitized Pipelines
- Conventional Wells
 - Abandoned
 - Active
 - DEP Abandoned List
 - DEP Orphan List
 - DEP Plugged
 - Operator Reported Not Drilled
 - Plugged Mined Through
 - Plugged OG Well
- Plugged Unverified
 - Proposed But Never Materialized
 - Regulatory Inactive Status
 - Uncharted Mined Through



Conventional Oil and Gas Wells in Greene County, PA and Related Infrastructure

This map shows the location of conventional oil and gas wells in Greene County, Pennsylvania as of July 2, 2024, according to data published by Pennsylvania Department of Environmental (DEP) Protection. Please note that oil and gas drilling began in the 19th Century, long before accurate records were kept with state regulators. Because of this, there are an unknown amount of orphaned and abandoned wells that are not listed on the map, but may pose risks in the current day. These wells can become pathways for fluids and gasses to migrate upward to the surface.

The gas pipelines and hydrocarbon liquids pipelines layers were obtained from the US Department of Homeland Security's open data portal. The locational accuracy of these layers is intentionally poor, ostensibly for national security reasons. However, other government agencies and sometimes the companies themselves sometimes publish more accurate route maps for newer projects, many of which have been digitized by FracTracker and are included in the FracTracker Recent Pipelines layer. While we make this as accurate as possible with the available information, none of these pipeline layers should be considered authoritative, and are shown here for reference purposes only.

Other layers shown here include the extent of subsurface mines, also from DEP via the Pennsylvania Spatial Data Access (PASDA). Compressor station data is from DEP air reports.

